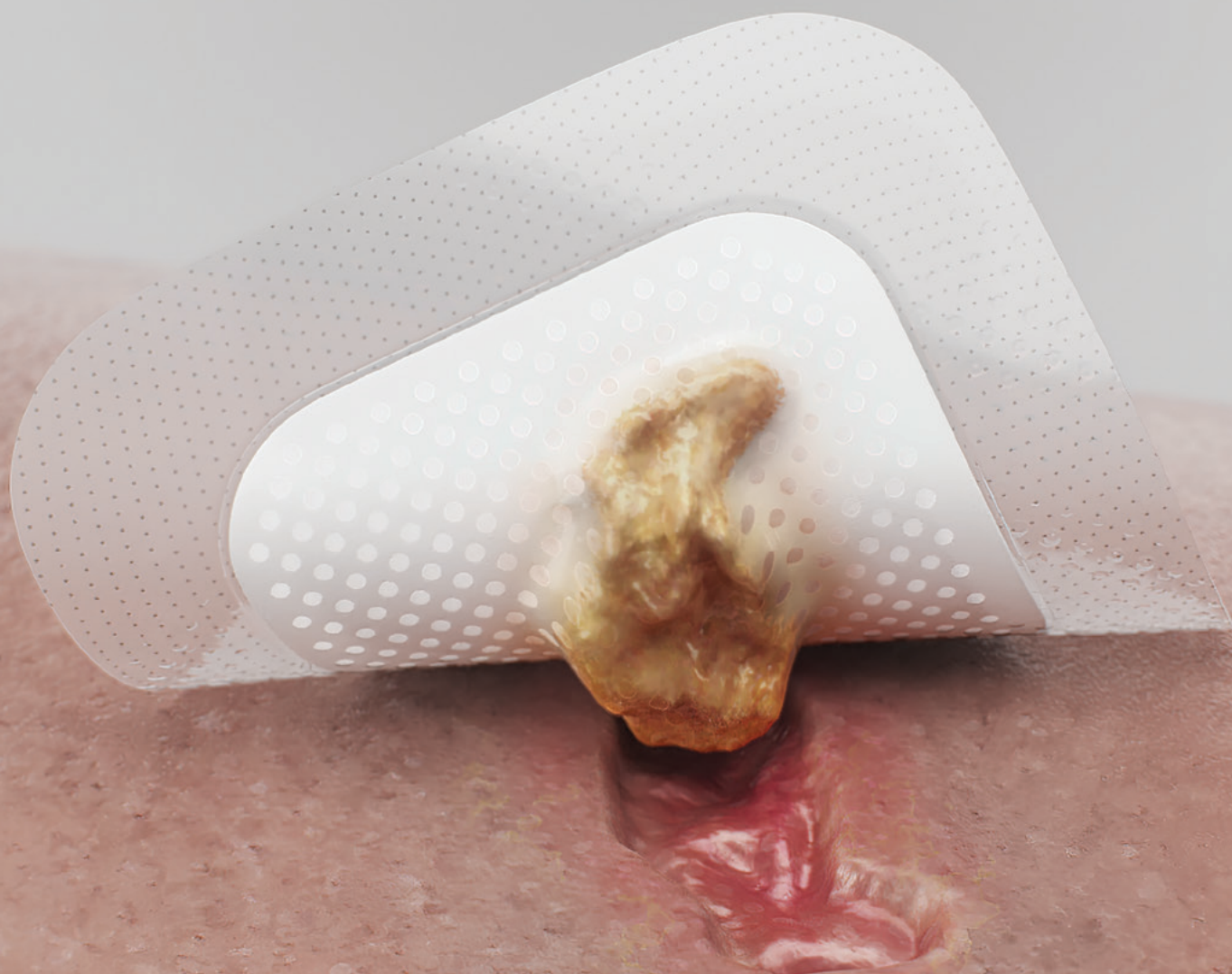


# Biatain® Silicone

Simplifying wound healing

Progress you can see



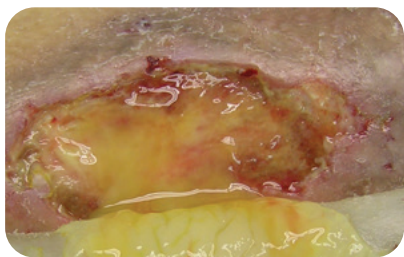
**Biatain® Silicone**

## Creating an optimal wound healing environment

---

### Not all silicone foam dressings are the same

If the dressing does not conform to the wound bed and manage exudate, you may see these challenges:



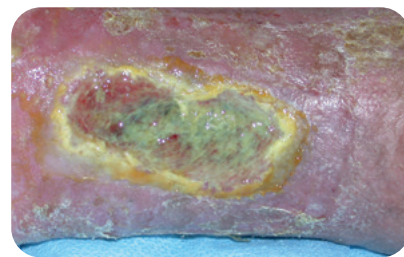
#### Exudate pooling

Exudate pooling can lead to leakage, unhealthy wound edges and bacterial growth, which can delay healing.



#### Maceration

Exudate that leaks onto the periwound skin can lead to maceration.



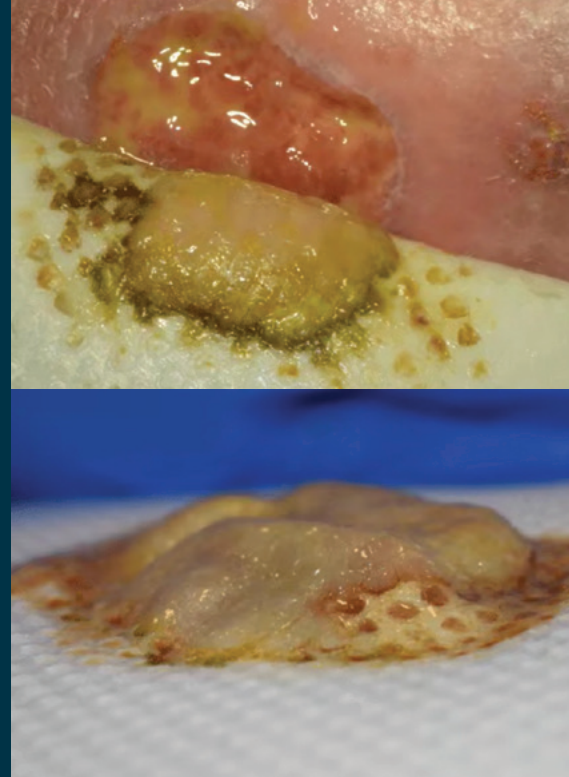
#### Risk of infection

Poor exudate management can lead to unhealthy periwound skin and the risk of infection.





**Biatain Silicone with 3DFit Technology** creates an optimal wound healing environment that reduces leakage along with the risk of maceration and infection.



### **Conforms to the wound bed**

Conforms to the wound bed up to 2 cm deep\* to reduce gap formation and exudate pooling.



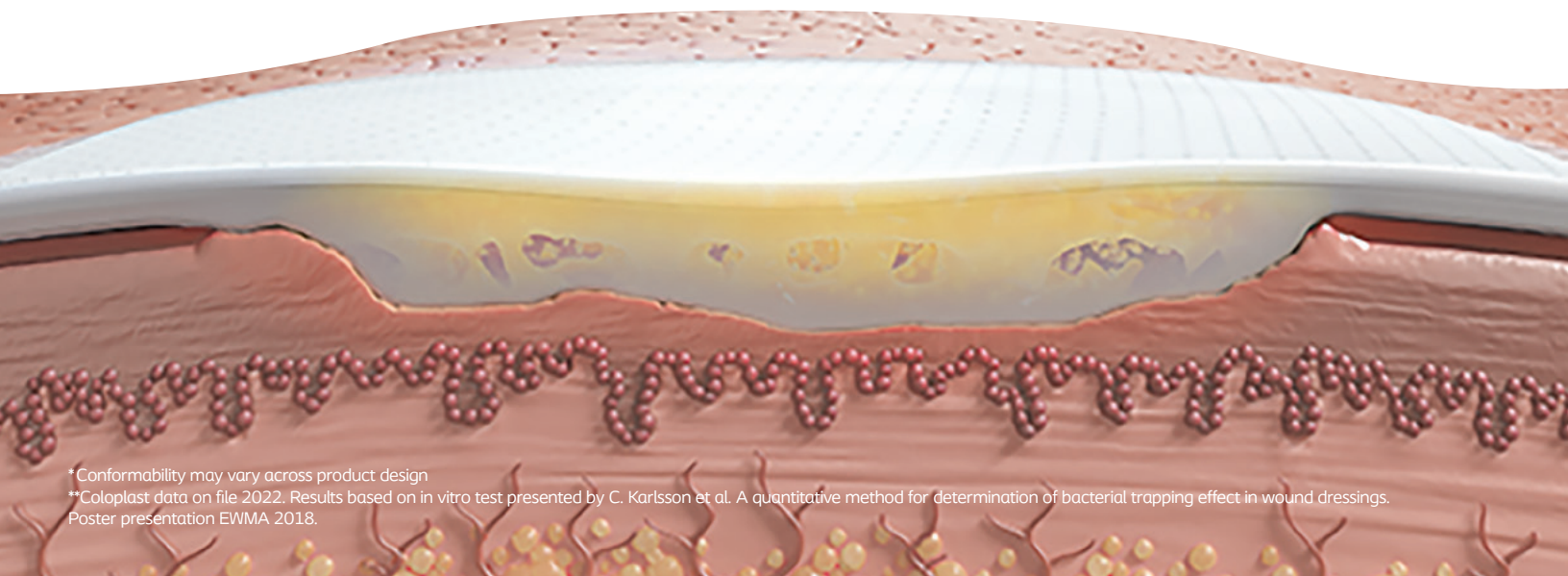
### **Absorbs exudate vertically**

Designed to absorb exudate vertically to reduce the spread of maceration to periwound skin.\*\*



### **Traps and retains bacteria**

Reduces the risk of spreading infection to the wound edges.



\*Conformability may vary across product design

\*\*Coloplast data on file 2022. Results based on in vitro test presented by C. Karlsson et al. A quantitative method for determination of bacterial trapping effect in wound dressings. Poster presentation EWMA 2018.

# Simplifying wound healing

---

In a randomized control trial over a four-week period, Biatain Silicone was shown to be as effective and cost significantly less than the standard of care, which includes both a filler and a secondary dressing.<sup>1,\*</sup>



**Biatain Silicone does the job of both a filler and a secondary foam dressing.\*\***

---



## 33%

**lower total costs** compared to a two-dressing regimen<sup>1,\*\*</sup>



## 47%

**product reduction** when using Biatain Silicone<sup>1</sup>

\*Standard of care: Aquacel® Extra filler combined with a Mepilex® secondary dressing. Third party brands are property of their respective owners.

\*\*For wounds with a depth of 2 cm or less

\*\*\*Based on UK pricing data

## Progress you can see

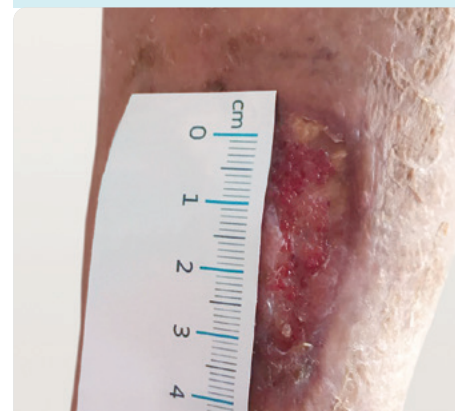
The **VIPES Biatain Silicone study** suggests that the use of Biatain Silicone—a dressing that matches the shape and depth of the wound—in community practice supports the healing of wounds.<sup>2</sup> This illustrates the importance of exudate and dead space management.

Before



Ulcer before

After



Ulcer after – 6 weeks later



Ulcer before



Ulcer after – 6 weeks later

## Wounds in treatment failure

Of the **64 patients** who took part:

Before



**83%** had  
stagnant wounds  
and/or poor exudate  
management<sup>2</sup>

After



**73%**  
of wounds healed  
or were progressing  
towards healing within  
a median of **22.5 days**<sup>2</sup>



# Simplifying wound healing. Progress you can see.

Choose from our full portfolio to meet your facility's needs.



## Biatain Silicone

Product code	Product description	Box size
33434	3 x 3" (7.5 x 7.5 cm)	10
33435	4 x 4" (10 x 10 cm)	10
33436	5 x 5" (12.5 x 12.5 cm)	10
33437	6 x 6" (15 x 15 cm)	5
33438	7 x 7" (17.5 x 17.5 cm)	5
33400	4 x 8" (10 x 20 cm)	5
33401	4 x 12" (10 x 30 cm)	5
33406	7 x 7" (18 x 18 cm) heel	5
39000	9.8 x 9.8" (25 x 25 cm) sacral	5
39001	6 x 7.5" (15 x 19 cm) sacral	5
39010	5.5 x 7.6" (14 x 19.5 cm) multishape	5

## Coloplast offers a full range of foam dressings including:

- Biatain® Silicone Lite
- Biatain® Non-Adhesive
- Biatain® Adhesive
- Biatain® Silicone Non-Border
- Biatain® Silicone Ag
- Biatain® Ag Non-Adhesive
- Biatain® IBU Non-Adhesive
- Biatain® IBU Soft Hold

1. Vogeli, D., Clinical performance and cost effectiveness of a Silicone foam with 3DFit™ Technology in chronic wounds compared with standard of care: An open randomised multicentre investigation. Accepted for publication *WJ*, 2024.  
2. Colboc, Hester, et al. "Performance of a silicone foam dressing in management of wounds in a community setting: a sub-analysis of the VIPES study." *Journal of Wound Care* 33.8 (2024): 542-553.

Coloplast was founded on passion, ambition, and commitment. We were born from a nurse's wish to help her sister and the skills of an engineer. Guided by empathy, our mission is to make life easier for people with intimate healthcare needs. Over decades, we have helped millions of people live more independent lives and continue to do so through innovative products and services.

Globally, our business areas include Ostomy Care, Continence Care, Advanced Wound Care, Interventional Urology and Voice and Respiratory Care.

For illustrative purposes only. This information is not intended to constitute medical or business advice or in any way replace the independent medical judgment of a trained and licensed physician with respect to any patient needs or circumstances and may not be representative of all patient outcomes. Actual amounts, performance, outcomes, and experience may vary. Prior to use, please see complete product instructions for use, including all product indications, contraindications, precautions, and warnings.

This example is only intended to be used as an example to help demonstrate the potential cost/resource/time of using Biatain Silicone. Coloplast does not guarantee any particular financial savings through use of its products.

Coloplast Corp. Minneapolis, MN 55411 / 1-800-533-0464 / [www.coloplast.us](http://www.coloplast.us)

Coloplast and the Coloplast logo are trademarks of Coloplast A/S.  
© 2025-04 Coloplast A/S. All rights reserved. PM-37428



## Interested in learning more?

Information is available on topics including:

- In-vitro test results vs. other foams
- Clinical photos
- Product demonstration
- Working with Coloplast
- Educational opportunities

Contact your Coloplast sales representative or scan the QR code to visit [coloplast.to/siliconefoam](http://coloplast.to/siliconefoam).

